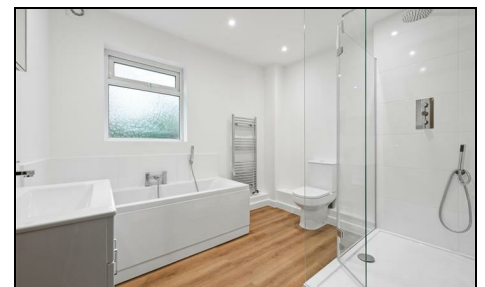


Alexandra Road Wimbledon, SW19 7JZ

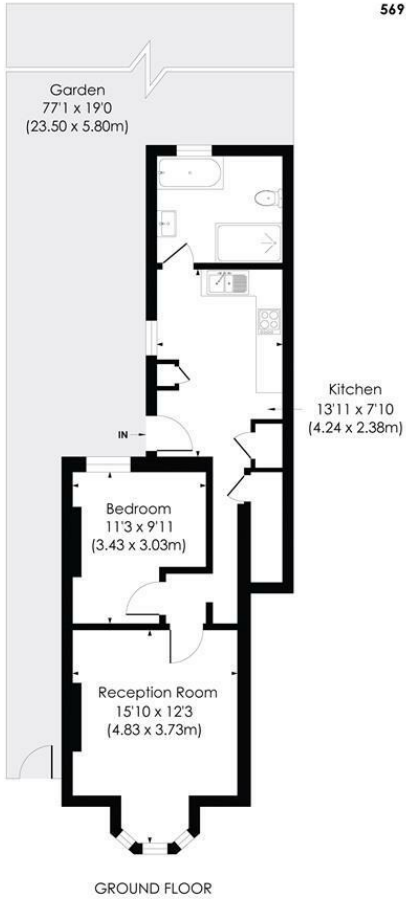
Offers In Excess Of £485,000 Leasehold - Share of Freehold



A fully refurbished one double bedroom Victorian ground floor flat with impressive private garden, sold with a share of the freehold, no onward chain and potential for off-street parking as well as excellent extension potential to the side and rear (STPP). Located moments from Wimbledon town centre the property offers well proportioned rooms and a spacious kitchen/diner and would be a fantastic opportunity for first time buyers and investors alike therefore an early viewing is highly recommended.

ALEXANDRA ROAD, SW19

Approx. Gross Internal Floor Area
569 Sq. ft/52.94 Sq. m

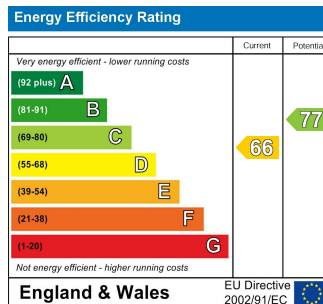


© Pixangle Property Marketing Ltd. info@pixangle.com Tel: 0208 870 2118



This floor plan has been prepared for the purpose of illustration only in accordance with the latest RICS code of measuring practice and is not to scale. All measurements and areas are approximate and whilst every effort has been made to ensure the accuracy of the plan contained here, no responsibility is taken for any error, omission or misstatement.

- Victorian Conversion Flat
- Fully Refurbished Throughout
- One Double Bedroom
- Kitchen/Breakfast Room
- Large Private Garden (Over 70ft in length)
- Potential Off Street Parking (STPP)
- No Onward Chain
- Sold With Share Of Freehold
- Service Charge - TBC
- EPC Rating D - Council Tax Band C



For Free Mortgage Quote and Best Mortgage Rates, call an Ellisons Mortgage Advisor on 020 8944 9494



Although these particulars are believed to be correct, their accuracy is not guaranteed and they do not form part of any contract.

Celebrating 30 years of successful Sales and Lettings in Merton

